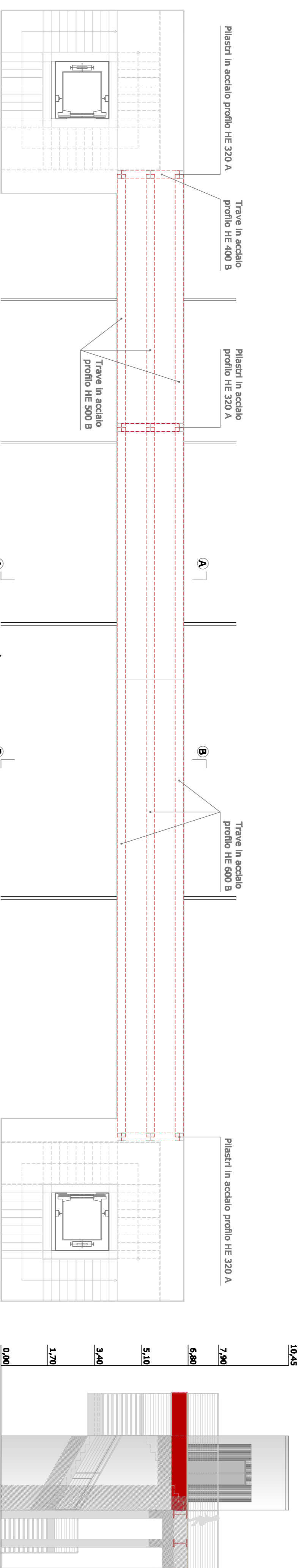
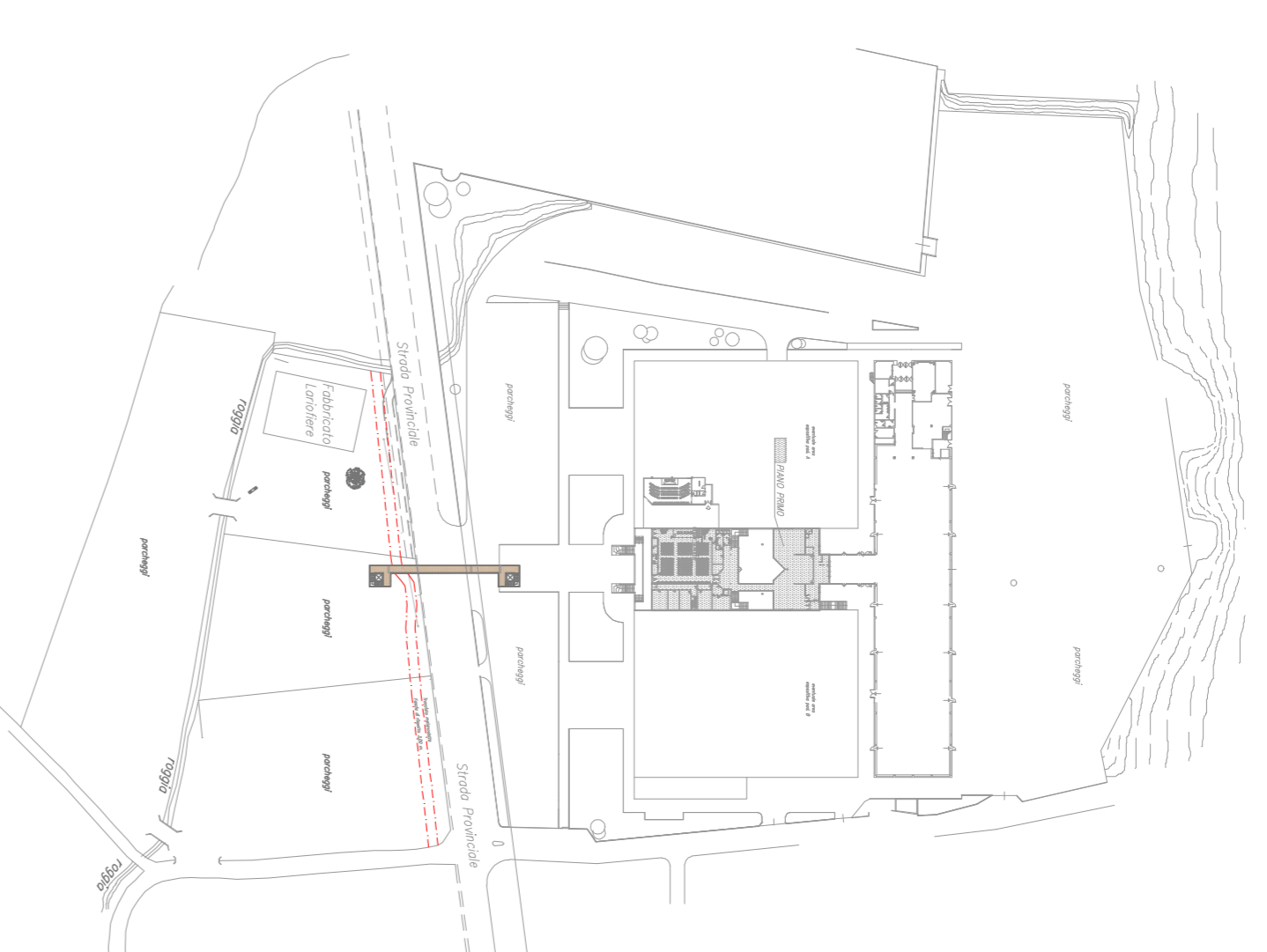
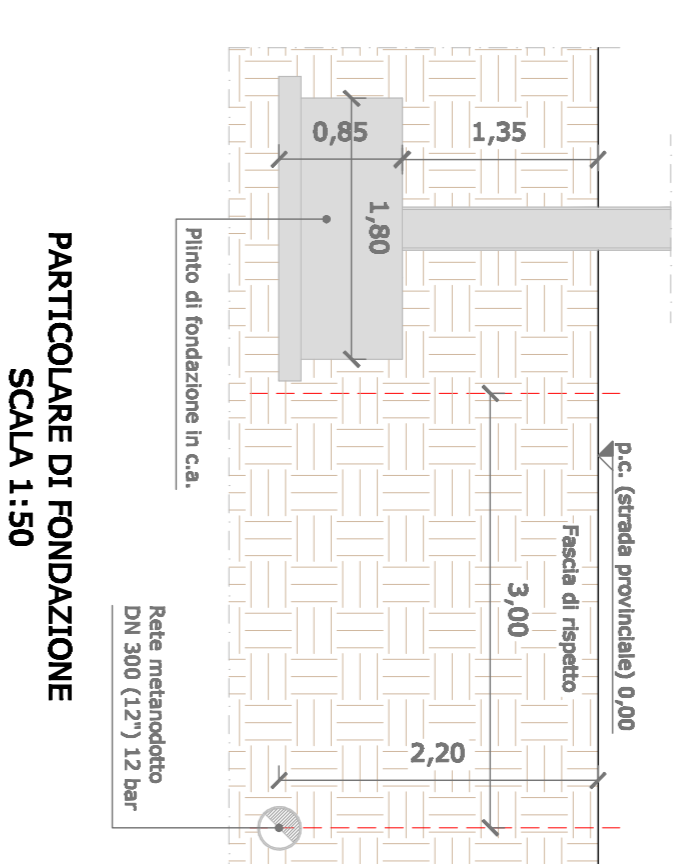
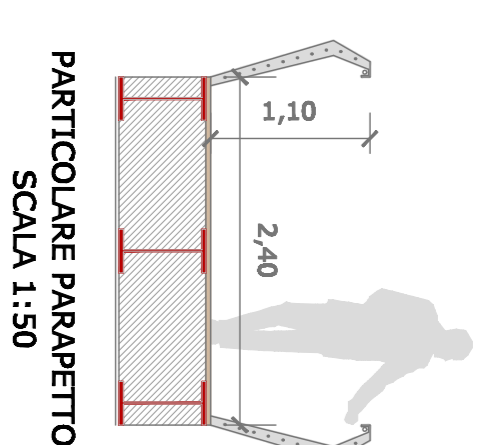
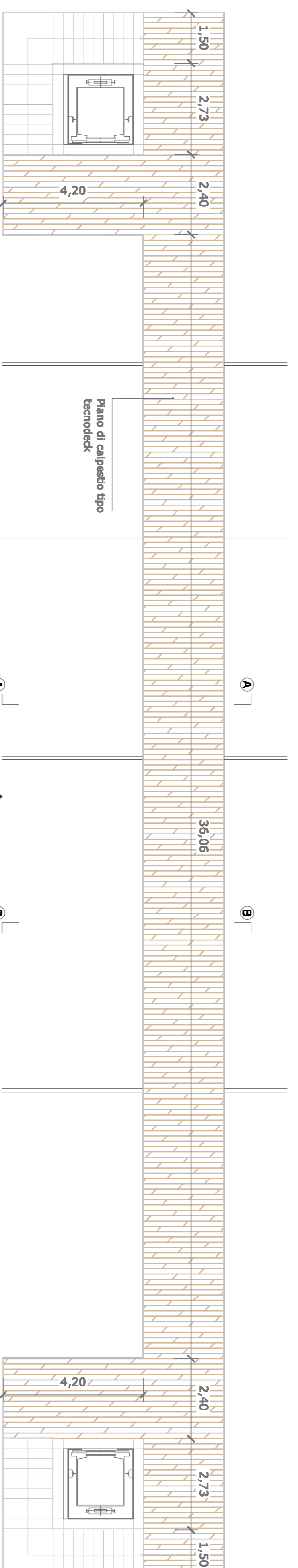
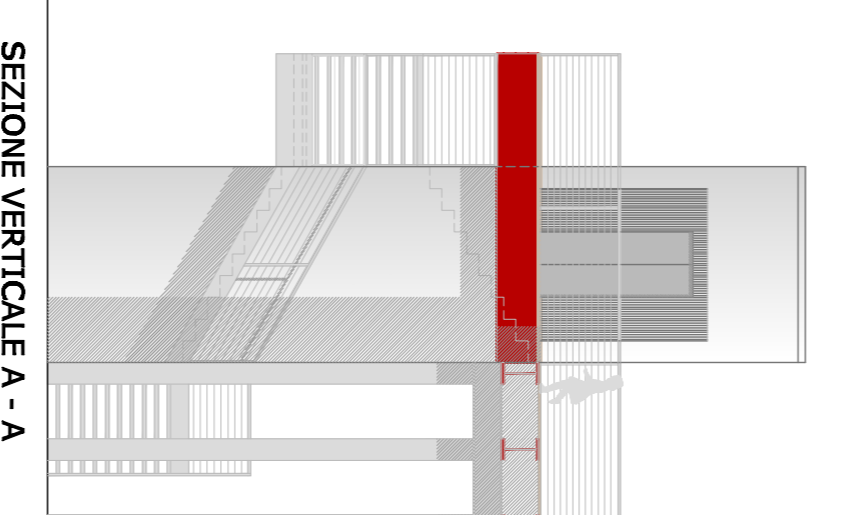


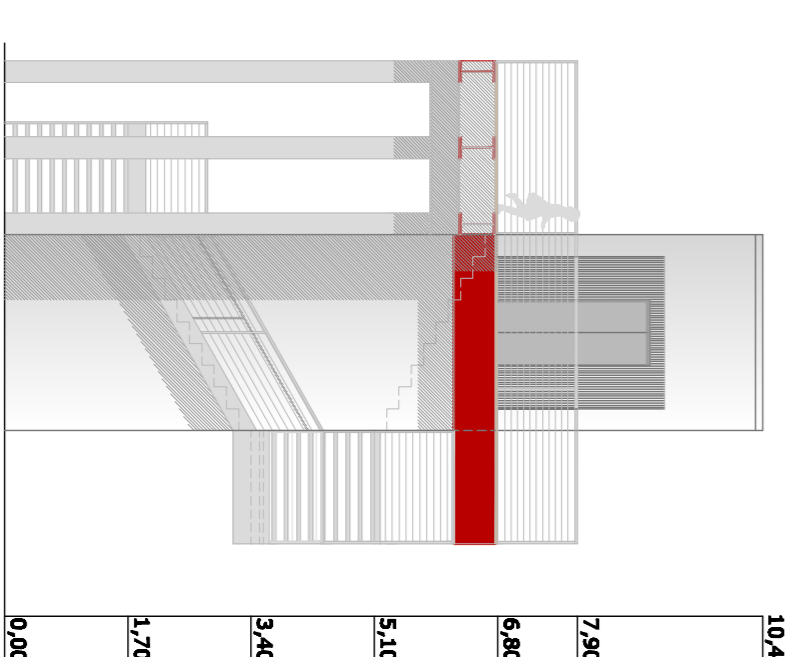
ATTRAVERSAMENTO IN QUOTA LARIOFIERE  
PROSPETTO OVEST  
DIREZIONE LECCO - COMO



PIANTA - VISTA INFERIORE



PIANTA - VISTA SUPERIORE



# COMUNE DI ERBA Provincia di Como

## PROGETTO ATTRAVERSAMENTO PEDONALE LARIOFIERE

OGGETTO: PROGETTO  
PLANIMETRIA GENERALE  
PIANTE  
PROSPETTO OVEST  
SEZIONI

TAVOLA: 4  
SCALA: 1:100 - 1:2000  
DATA: LUGLIO 2013

LA PROPRIETA':  
LARIOFIERE  
Centro espositivo e congressuale  
Viale Resegone - 22036 ERBA (CO)  
Tel.: 0341.857143 - Fax: 0341.857403  
Tel.: 031.8571 - Fax: 031.857403

IL PROGETTISTA:  
Ing. CAMILLO LUCIO FILICE  
Via Maccon n. 30 - 23900 LECCO  
Tel.: 0341.362892 - Fax: 0341.271308  
E-Mail: Filice@studiofilice.it  
P. IVA: 00599310139